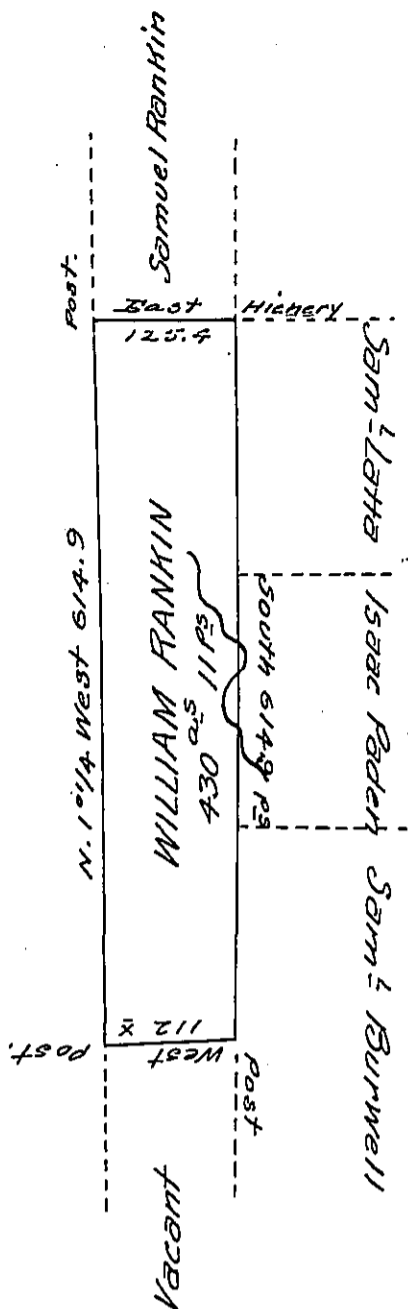


New Connecticut or Western boundary of Penna



In pursuance of a warrant for 400<sup>acs</sup> dated the 31<sup>st</sup> day of December 1801 was surveyed the 31<sup>st</sup> day of November 1802 for William Rankin the above described Tract of land containing 430 Acres 11 Perches and allowances of six per Cent for Roads & c. Situate in Conneaut<sub>2</sub> Townships in the County of Crawford.

William M<sup>e</sup> Arthur D.S.

Samuel Cochran Esquire  
Surveyor General.

IN TESTIMONY that the above is a copy of the original remaining on file in the Department of Internal Affairs of Pennsylvania, made conformably to an Act of Assembly approved the 16th day of February, 1833, I have hereunto set my Hand and caused the Seal of said Department to be affixed at Harrisburg, this thirteenth day of July 1906.

*Isaac D. Brown*  
Secretary of Internal Affairs.